

Insert your Windows XP installation CD-ROM and power-on/restart your system:

```
PhoenixBIOS 4.0 Release 6.0  
Copyright 1985-2000 Phoenix Technologies Ltd.  
All Rights Reserved  
Copyright 2000-2001 VMware, Inc.  
VMware BIOS build 212
```

```
CPU = Pentium III 733 MHz  
640K System RAM Passed  
159M Extended RAM Passed  
256K Cache SRAM Passed  
Mouse initialized  
Fixed Disk 0: VMware Virtual IDE Hard Drive  
ATAPI CD-ROM: VMware Virtual IDE CDROM Drive
```

```
Press <F2> to enter SETUP
```

```
Press any key to boot from CD..._
```

```
Setup is inspecting your computer's hardware configuration...
```

Windows Setup

Setup is loading files (Windows Executive)...

Windows XP Professional Setup

Welcome to Setup.

This portion of the Setup program prepares Microsoft(R)
Windows(R) XP to run on your computer.

- To set up Windows XP now, press ENTER.
- To repair a Windows XP installation using Recovery Console, press R.
- To quit Setup without installing Windows XP, press F3.

ENTER=Continue R=Repair F3=Quit

Select "to set up Windows XP now" and press the ENTER-key :

Windows XP Licensing Agreement

Microsoft Windows XP Professional

END-USER LICENSE AGREEMENT

IMPORTANT-READ CAREFULLY: This End-User License Agreement ("EULA") is a legal agreement between you (either an individual or a single entity) and Microsoft Corporation for the Microsoft software product identified above, which includes computer software and may include associated media, printed materials, "online" or electronic documentation, and Internet-based services ("Product"). An amendment or addendum to this EULA may accompany the Product. YOU AGREE TO BE BOUND BY THE TERMS OF THIS EULA BY INSTALLING, COPYING, OR OTHERWISE USING THE PRODUCT. IF YOU DO NOT AGREE, DO NOT INSTALL OR USE THE PRODUCT; YOU MAY RETURN IT TO YOUR PLACE OF PURCHASE FOR A FULL REFUND.

1. GRANT OF LICENSE. Microsoft grants you the following rights provided that you comply with all terms and conditions of this EULA:

- * Installation and use. You may install, use, access, display and run one copy of the Product on a single computer, such as a workstation, terminal or other device ("Workstation Computer"). The Product may not be used by more than two (2) processors at any one time on any

F8-I agree ESC-I do not agree PAGE DOWN=Next Page

Windows XP Professional Setup

The following list shows the existing partitions and unpartitioned space on this computer.

Use the UP and DOWN ARROW keys to select an item in the list.

- To set up Windows XP on the selected item, press ENTER.
- To create a partition in the unpartitioned space, press C.
- To delete the selected partition, press D.

4895 MB Disk 0 at Id 0 on bus 0 on atapi [MBR]

Unpartitioned space	4895 MB
---------------------	---------

ENTER=Install C=Create Partition F3=Quit

Windows XP Professional Setup

A new partition for Windows XP has been created on
4095 MB Disk 0 at Id 0 on bus 0 on atapi [MBR].

This partition must now be formatted.

From the list below, select a file system for the new partition.
Use the UP and DOWN ARROW keys to select the file system you want,
and then press ENTER.

If you want to select a different partition for Windows XP,
press ESC.

Format the partition using the NTFS file system (Quick)
Format the partition using the FAT file system (Quick)
Format the partition using the NTFS file system
Format the partition using the FAT file system

ENTER=Continue ESC=Cancel

Windows XP Professional Setup

Please wait while Setup formats the partition

C: Partition1 [New (Raw)] 4087 MB (4086 MB free)
on 4095 MB Disk 0 at Id 0 on bus 0 on atapi [MBR].

Setup is formatting...

20%



Windows XP Professional Setup

Please wait while Setup copies files
to the Windows installation folders.
This might take several minutes to complete.

Setup is copying files...

4%



| Copying: symbole.fon

The system will then need to reboot :

Windows XP Professional Setup

This portion of Setup has completed successfully.
If there is a floppy disk in drive A:, remove it.
To restart your computer, press ENTER.
When your computer restarts, Setup will continue.

Your computer will reboot in 9 seconds....



ENTER=Restart Computer

After the restart, Windows XP starts the first time with the Graphical User Interface (GUI) :



Copyright © 1985-2001
Microsoft Corporation

Microsoft



Collecting information

Dynamic Update

Preparing installation

Installing Windows

Finalizing installation

Setup will complete in approximately:
39 minutes

An exciting new look

Windows® XP Professional sports a brand-new visual design that combines a sleek look, clean lines, and appealing colors with a task-oriented design and exceptionally streamlined navigation.

The redesigned Start menu makes it easier to find important information and to access the programs you use most frequently.

By automatically cleaning up the notification area of the taskbar and grouping related taskbar items, Windows XP makes it easier to switch between programs and to open, view, or close multiple items at the same time.



Setup will continue to copy files and to install devices :

Collecting information

Dynamic Update

Preparing installation

Installing Windows

Finalizing installation

Setup will complete in approximately:
37 minutes

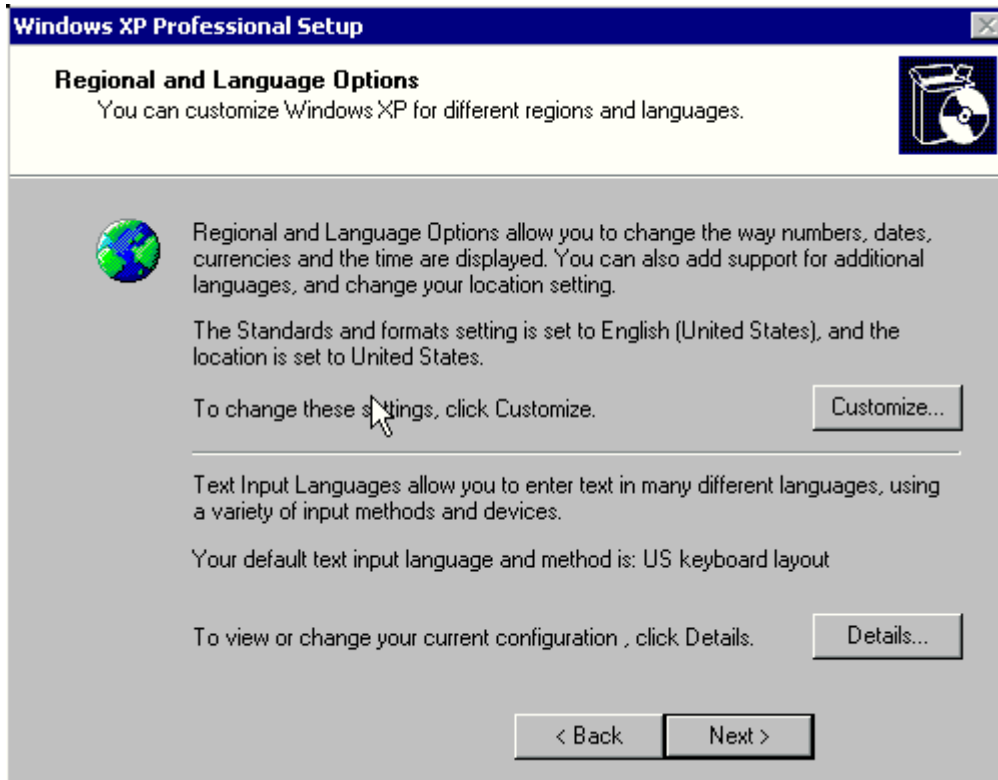
Installing Devices



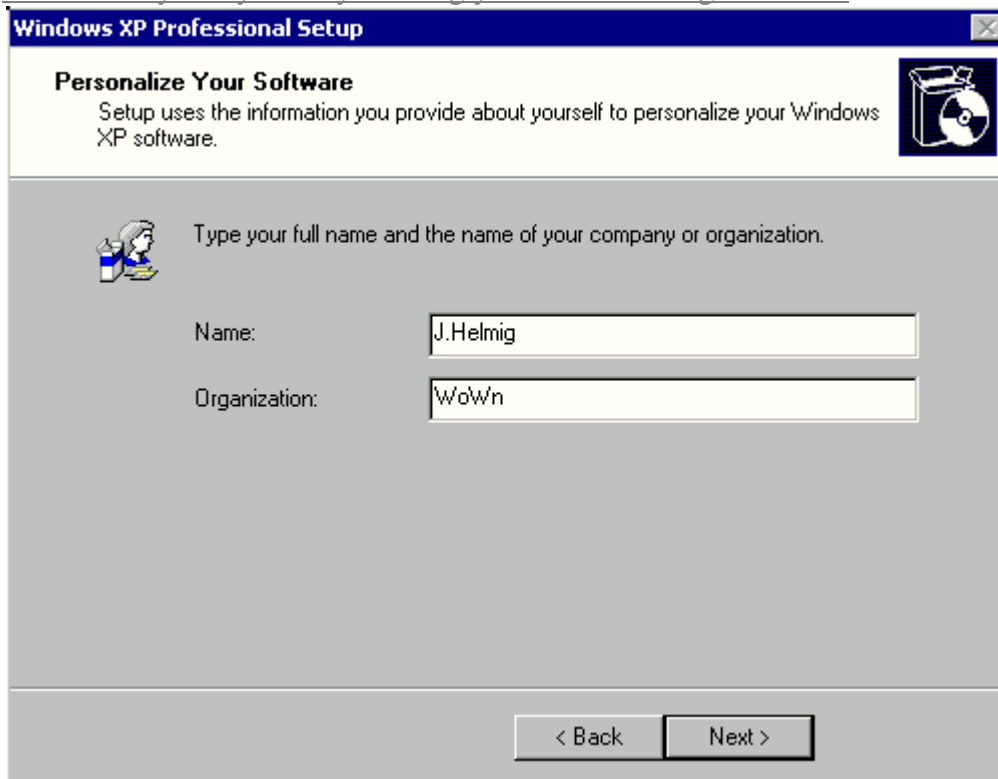
Get support for the latest hardware and software

Windows[®] XP Professional supports a large number of programs and has built-in support for the latest hardware, including DirectX[®] 8 for great multimedia support.

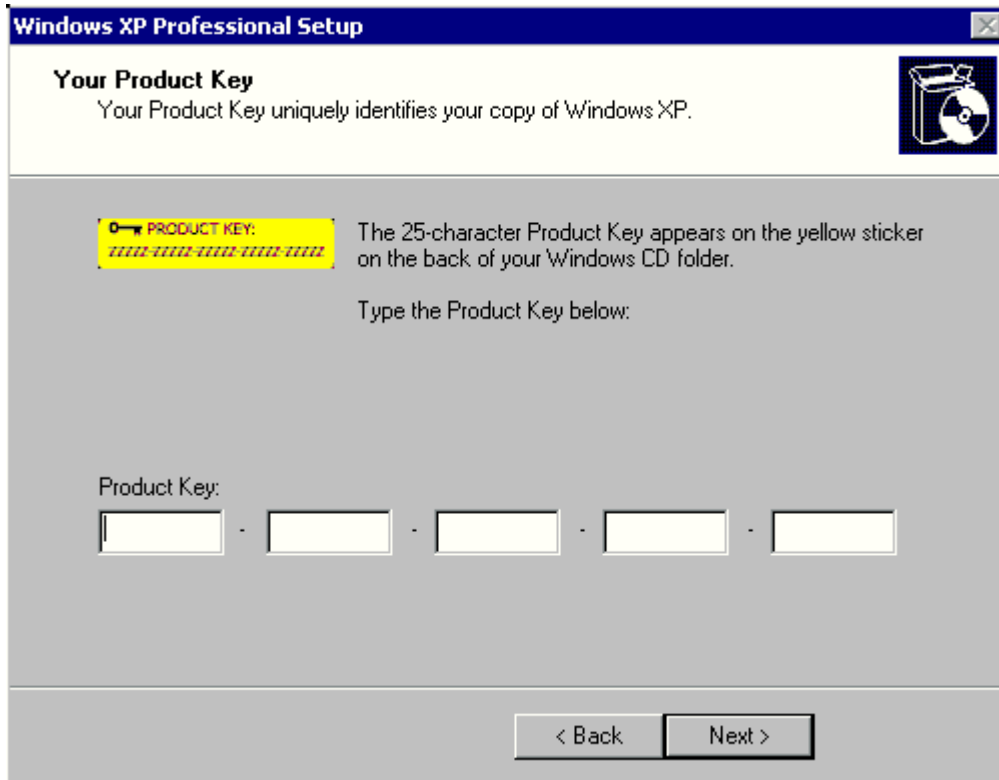
When you insert a floppy disk, ZIP[®] disk, CD, or memory card from your digital camera, Windows XP identifies the content (such as pictures, music, or video), and automatically starts the appropriate program. Windows XP Professional also supports DVD-RAM drives.



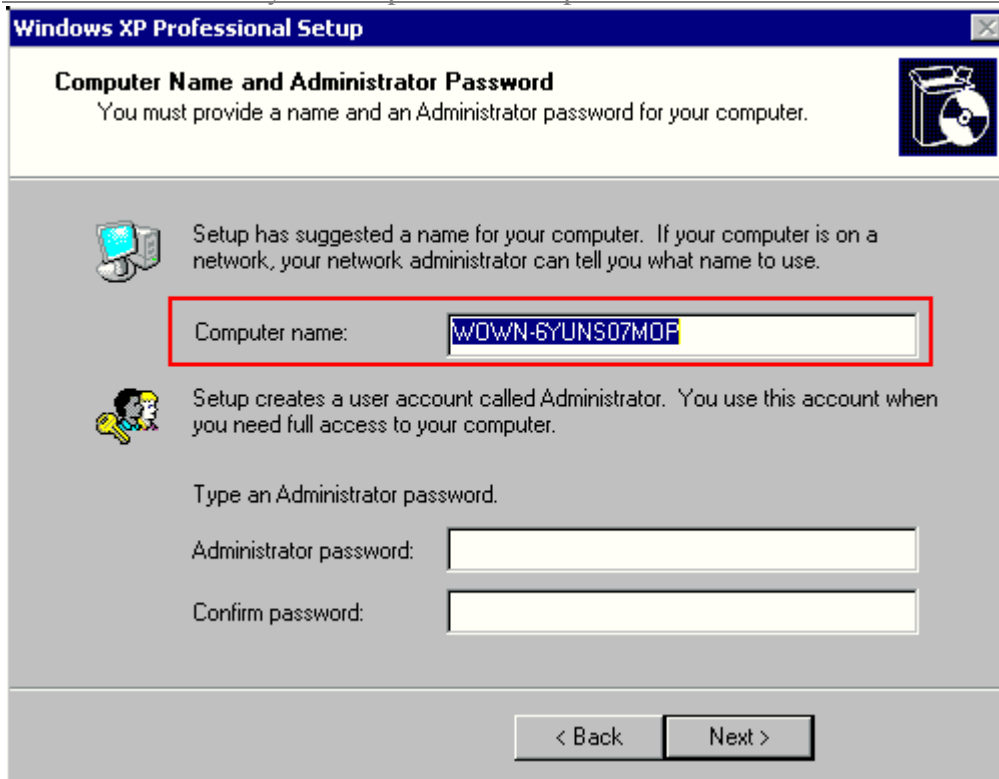
Personalize your system by entering your name and organization :

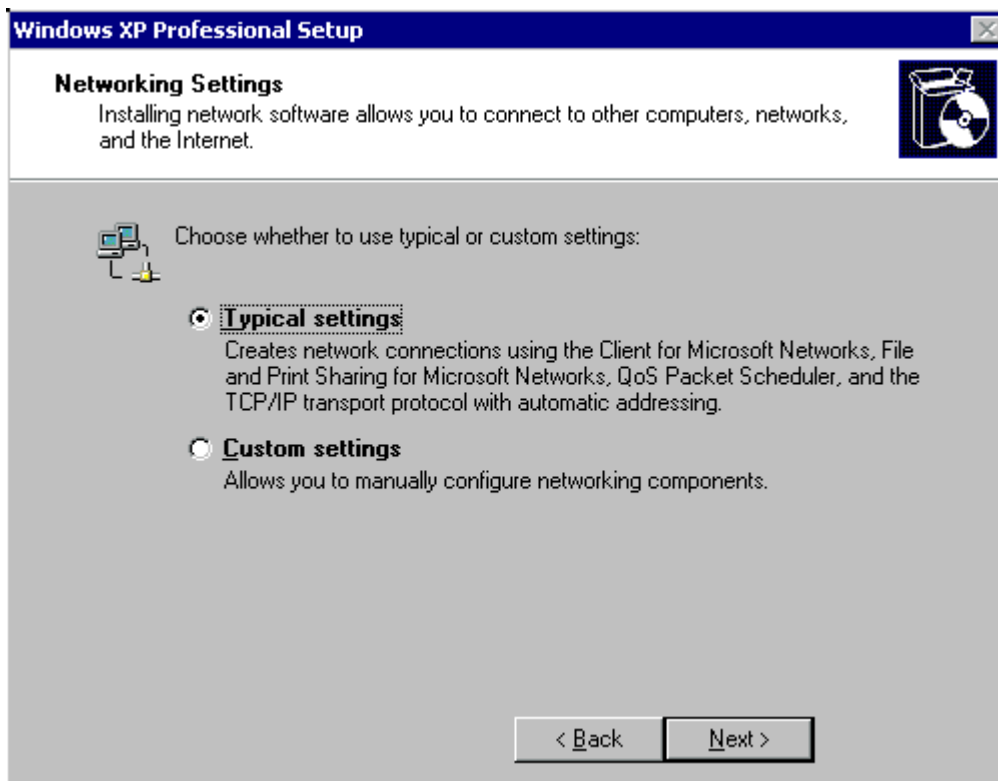
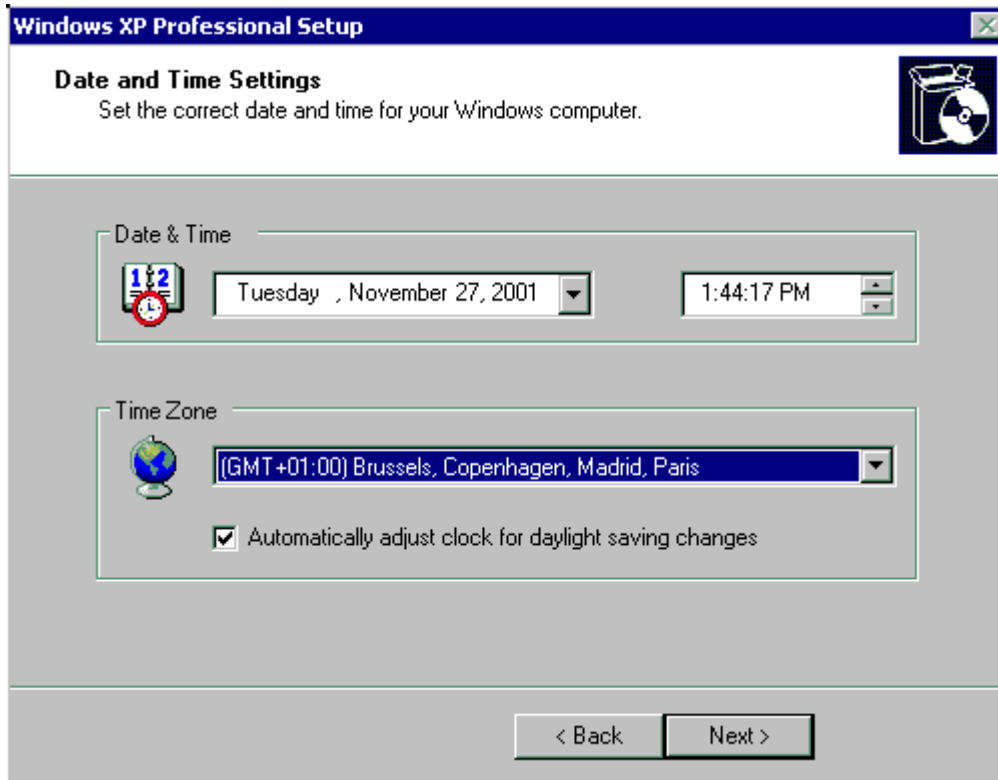


Enter your 25 character Product key (as it was delivered with your Windows XP CD-ROM) :



Define the name for your computer and the password for the Administrator account :





Setup continues with "Finalizing installation" (nothing to do for you) :

Collecting information

Dynamic Update

Preparing installation

Installing Windows

Finalizing installation

Setup will complete in approximately:
9 minutes

Saving settings



Be assured of greater accessibility

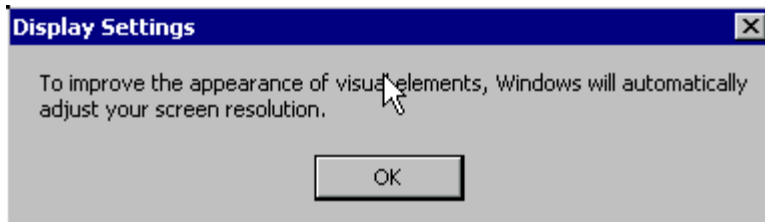
Windows® XP Professional provides accessibility features that make it easier for people to use computers.

The Accessibility Wizard helps you customize your computer screen, keyboard, and mouse to fit your needs.

To make items on the screen easier to see, you can increase the contrast, enlarge the text, and have your mouse pointer leave a trail. You can customize keyboard options and replace computer sounds with visual alerts.

Windows XP also includes basic utilities that allow you to magnify the screen or use an on-screen keyboard. You can start these utilities from the Utility Manager—even when logging on to your computer—by pressing the Windows logo key + U.

The system will reboot again :



Setup will configure then your screen resolution.

